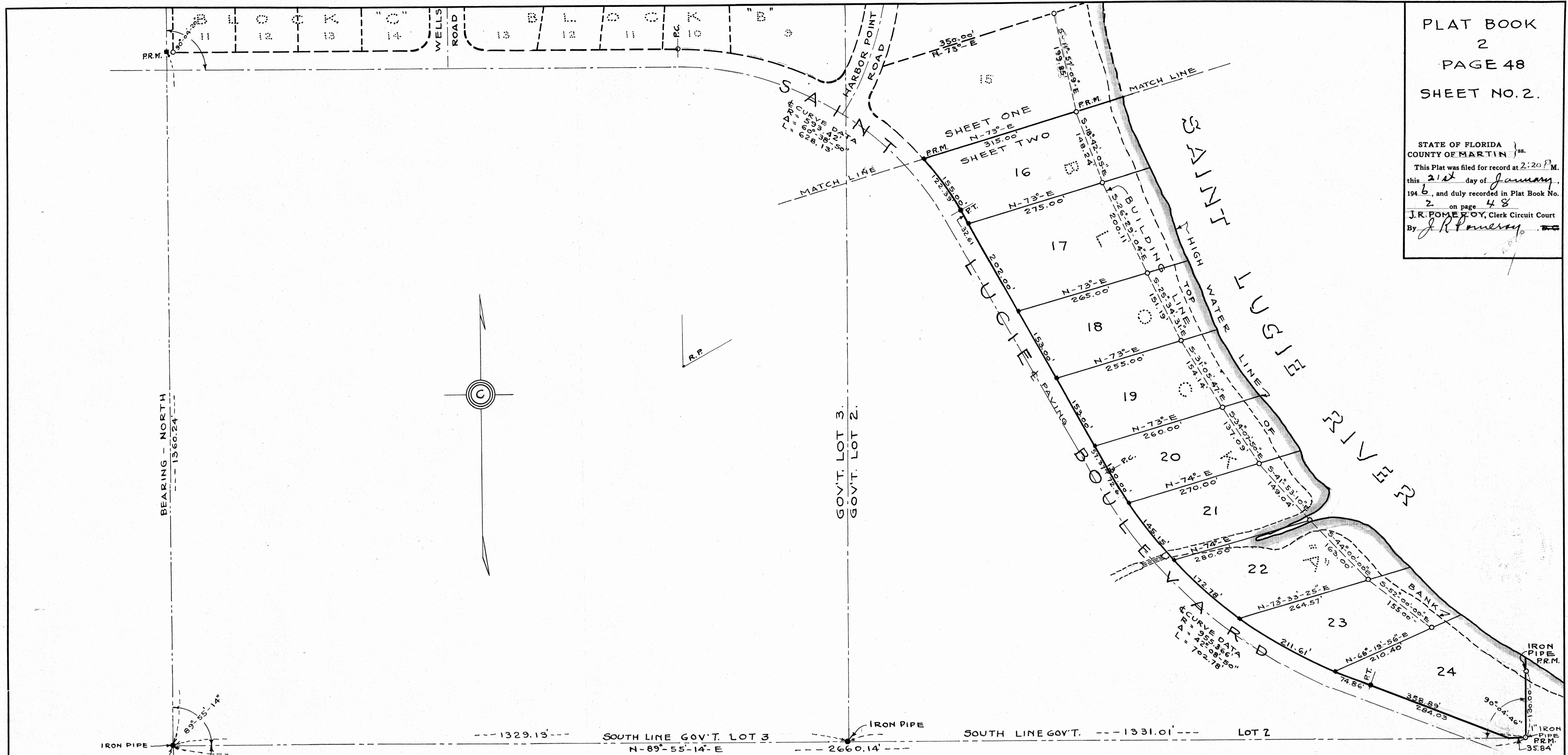
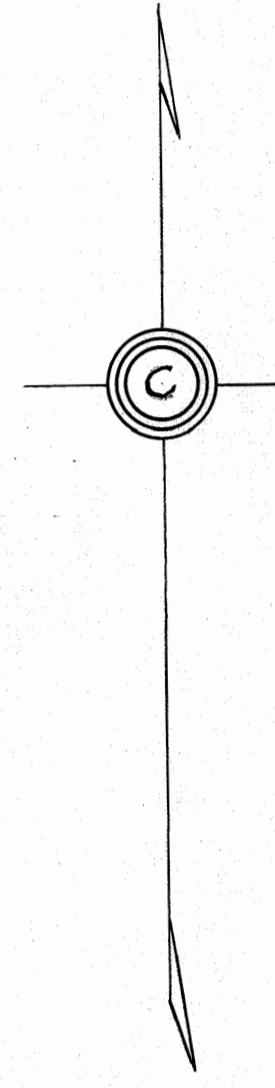


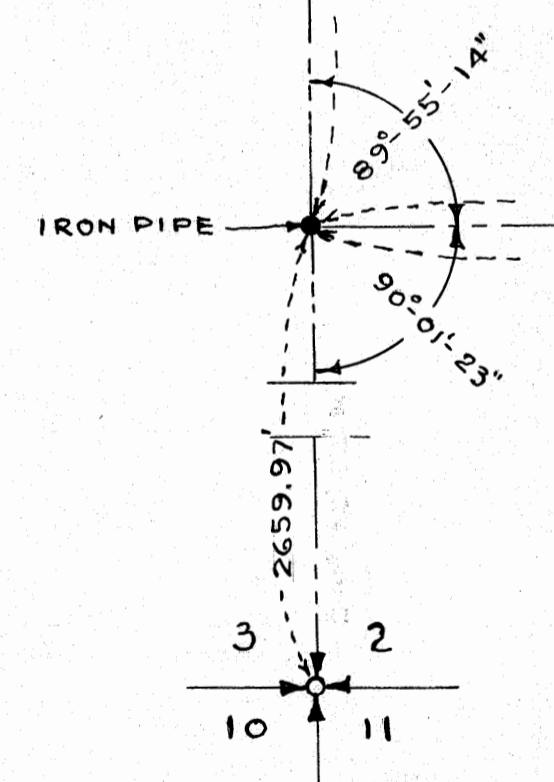
STATE OF FLORIDA }
COUNTY OF MARTIN }
This Plat was filed for record at 2:20 P.M.
this 21st day of January
1948, and duly recorded in Plat Book No.
2 on page 48
By J.R. Pomeroy, Clerk Circuit Court



BEARING - NORTH
1360.24'



GOV'T. LOT 3.
GOV'T. LOT 2.



SNUG HARBOR

SHEET TWO - OF TWO SHEETS
A PART OF GOV'T. LOT 2, SECTION 2, TWP 38S, RGE 41E,
LYING EAST OF SAINT LUCIE BOULEVARD
MARTIN COUNTY, FLORIDA.



SCALE 1"=100 FT.

DECEMBER 1945

NOTE:
10 FOOT EASEMENT ON REAR OF LOTS,
BLOCK "A", FOR UTILITY PURPOSES.

PERMANENT REFERENCE MONUMENTS SHOWN - O
CONCRETE MONUMENTS AT LOT CORNERS
ON ROAD - ■
IRON PIPE AT LOT CORNERS - IN REAR OF LOTS - ●
IRON PIPE AT CURVE POINTS, ON BOULEVARD - ♣

CERTIFICATE
STATE OF FLORIDA }
COUNTY OF PALM BEACH }
I HEREBY CERTIFY: THAT I HAVE SURVEYED AND PLATTED
THE TRACT OF LAND SHOWN ON THE ATTACHED PLAT AS "SNUG
HARBOR" AND THAT SAID PLAT IS A CORRECT REPRESENTATION
THEREOF TO THE BEST OF MY KNOWLEDGE AND BELIEF AND THAT
PERMANENT REFERENCE MONUMENTS HAVE BEEN PROPERLY
PLACED AS REQUIRED BY LAW.

Geov. Carr
REGISTERED LAND SURVEYOR
FLORIDA CERTIFICATE NO. 140.

SUBSCRIBED AND SWORN TO BEFORE ME
THIS 19th DAY OF January 1948.

R. L. Callaway
NOTARY PUBLIC.

MY COMMISSION EXPIRES
August 17, 1949

REFERENCES:
MAPS T-13, T-75.
F.B. J-7, Pgs. 15-27.
F.B. J-11, Pgs. 33-42.
F.B. V-7, Pgs. 44-56.

IN 2 SHEETS SHEET NO. 2.
GEO. W. CARR
REGISTERED CIVIL ENGINEER & LAND SURVEYOR
FLORIDA CERTIFICATE NO'S 173-140
WEST PALM BEACH, FLORIDA